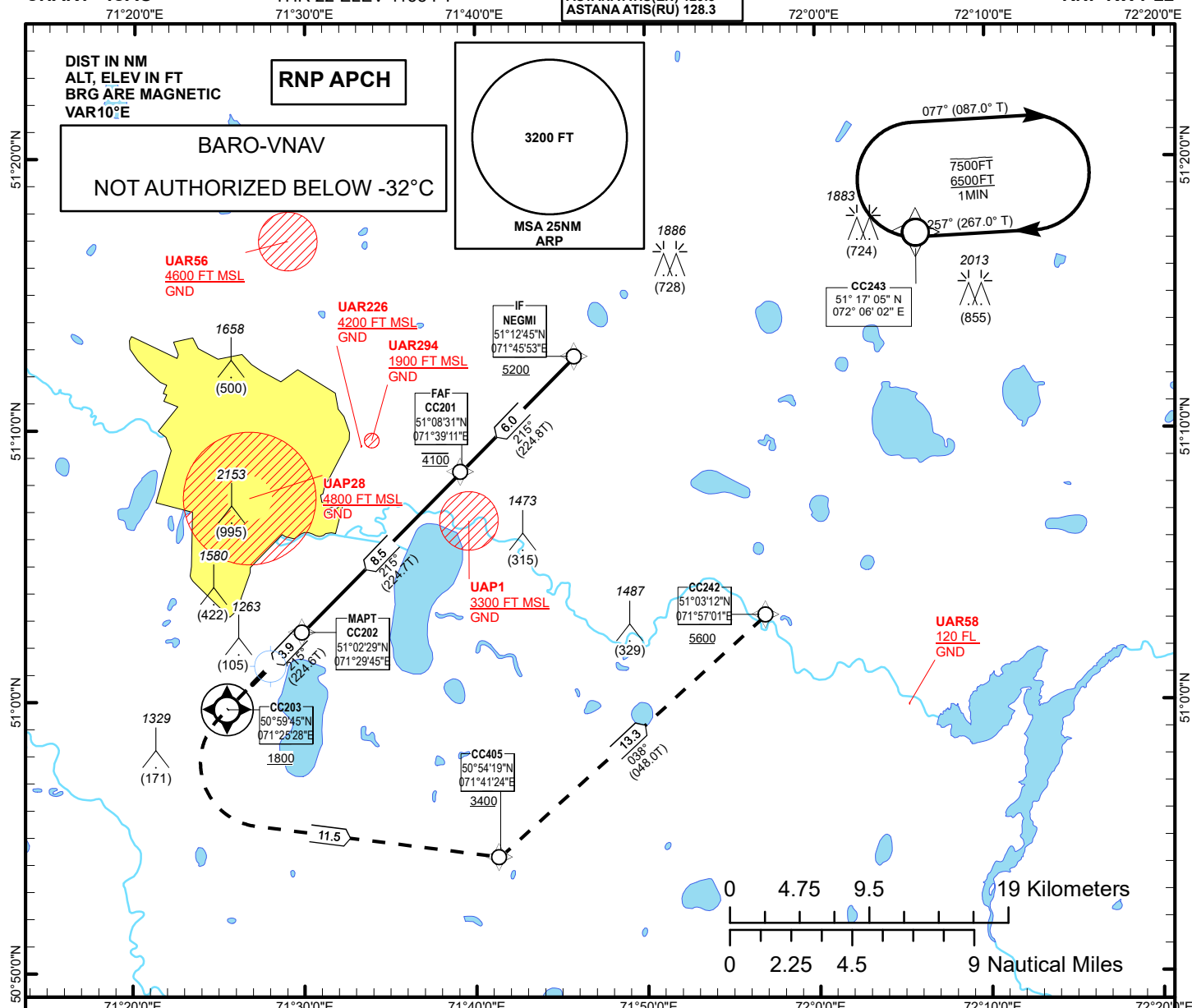


INSTRUMENT
APPROACH
CHART - ICAO

AERODROME ELEV 1166 FT
HEIGHTS RELATED TO
THR 22 ELEV 1158 FT

ASTANA TOWER 135.5
ASTANA APPROACH 124.6
ASTANA RADAR 120.7
ASTANA GROUND 119.6
ASTANA ATIS(EN) 129.5
ASTANA ATIS(RU) 128.3

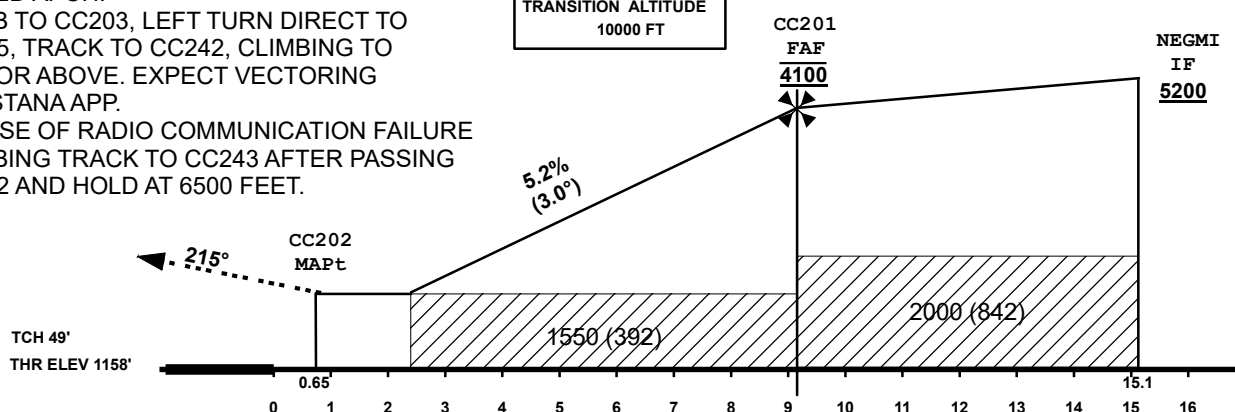
ASTANA/NURSULTAN NAZARBAYEV
INTERNATIONAL AIRPORT
RNP RWY 22



MISSED APCH:

CLIMB TO CC203, LEFT TURN DIRECT TO CC405, TRACK TO CC242, CLIMBING TO 5600 OR ABOVE. EXPECT VECTORING BY ASTANA APP.
IN CASE OF RADIO COMMUNICATION FAILURE CLIMBING TRACK TO CC243 AFTER PASSING CC242 AND HOLD AT 6500 FEET.

TRANSITION ALTITUDE
10000 FT



OCA (OCH)		A	B	C	D
Straight	LNAV	1550 (392)			
	LNAV/VNAV	1430 (272)	1450 (292)	1450 (292)	1460 (302)

For data tabulation see verso

GS	Kt	80	100	120	140	160	180
Rate of descent	ft/min	420	530	640	740	850	950
PFAF-MAPT 8.5 NM	min:sec	05:27	04:21	03:38	03:07	02:43	02:25

TABULAR DESCRIPTION RNP APCH IAP RWY22											
Serial Number	Path Descriptor	Waypoint Identifier	Fly - over	Course °M(°T)	Magnetic Variation(°)	Distance NM	Turn Direction	Altitude FT	Speed KT	VPA (°)	Navigation Specification
010	IF	NEGMI	-	-	10			+5200	-230		RNP APCH
020	TF	CC201	-	215(224.8)	10	6	-	@4100	-180		RNP APCH
030	TF	CC202	-	215(224.7)	10	8.5	-	@1414		-3.0	RNP APCH
040	CF	CC203	Y	215(224.6)	10	3.9	-	+1800	-210	+1.4	RNP APCH
050	DF	CC405	-		10	11.5	L	+3400		+1.4	RNP APCH
060	TF	CC242	-	38(48.01)	10	13.3	L	+5600	-230	+1.4	RNP APCH
WAYPOINT LIST											
RNP APCH IAP RWY22											
Waypoint Identifier		Coordinates									
NEGMI		511245.30N 0714553.00E									
CC201		510830.68N 0713910.95E									
CC202		510229.41N 0712944.80E									
CC203		505944.92N 0712528.24E									
CC405		505418.51N 0714124.46E									
CC242		510312.43N 0715700.84E									